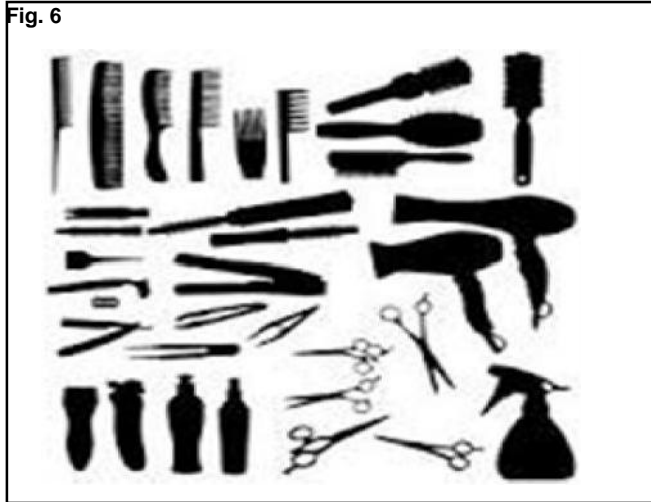


Fig. 6



Basics of blow dry:

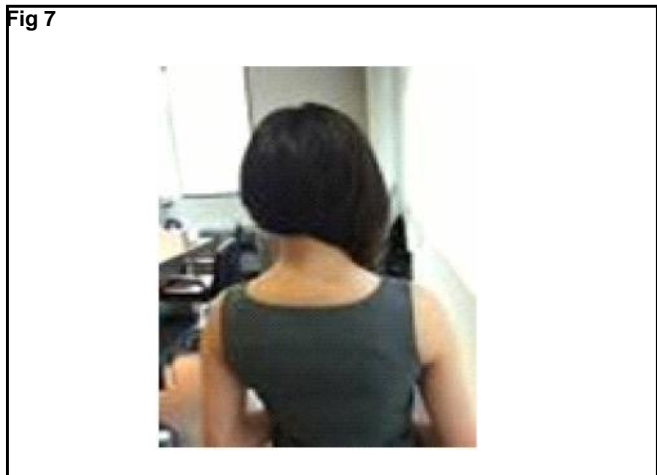
Purpose of blow Drying

This is the process of styling wet hair so that you achieve a particular shape when the hair is dry. The most popular way of drying hair today is the hand-held hair dryer (commonly called a blow-dryer).

Drying hair is the process of styling wet hair while blow drying it using hand held dryers various techniques and used to create different effects. While directing heated air on to the wet hair, you mould the hair with brushes, combs or your fingers.

Blow-styling works by changing the hair's structure. Heat softens it. The weaker links between the polypeptide chains (hydrogen bonds and salt bridges are broken, allowing the keratin to stretch & change from its alpha to its beta form. While hair is wet, and heat is applied it can be moulded into a chosen shape.

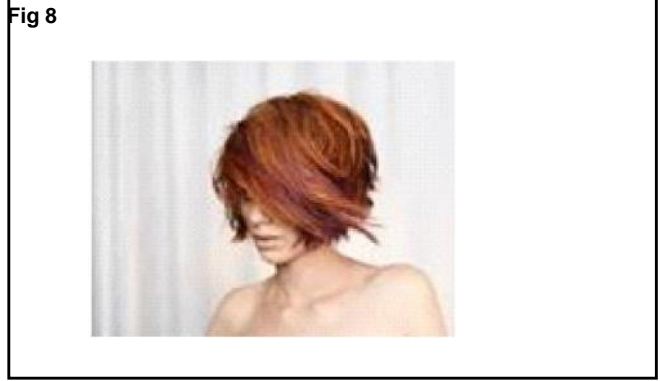
Fig 7



Types of Blow drying

Blow waving: Shaping the hair into waves, using directed heated air from a dryer, and combs, brushes or your hands. It achieves natural, soft fullness.

Fig 8



Blow drying: Simply drying the hair with the handheld dryer. It is usual to blow dry hair into a chosen shape, or in a required direction.

Scrunch drying: Gripping and squeezing clumps of hair while directing heated air into the hand. The process yields a casual, ruffled, moulded shape.

Finger or hand drying: Lifting, teasing, pulling and directing hair with the fingers or hands casual, soft and full shapes can be achieved.

Client & Trolley preparation

- 1 After shampooing, return the client to the seated position and comb out any tangle in the hair.
- 2 Remove excess moisture from by towel dries the hair,
- 3 Secure a neck strip around the client's neck
- 4 Arrange all concern tools and material in the trolley.

Basics of Blow Drying

After shampooing, towel-dry the hair (wet hair takes a lot longer to blow-dry);

Apply styling aid. eg mousse, gel, spray;

Mould the hair into the desired shape with your hands or a comb;

Mark out each section of hair cleanly and, starting at the bottom, work upwards using the angles of the cut to achieve the desired effect;

Direct the nozzle on the hair dryer down the hair shaft. This will smooth the cuticle down and give you a better finished look.

Work the hairdryer and brush in equally. Don't hold the dryer still over a section as this will burn the hair rather than shape it.

Use the cold feature on the hair dryer, if there is one, to fix the hair into shape. (hot air moulds the hair, cold air fixes it)