

Hair Cutting

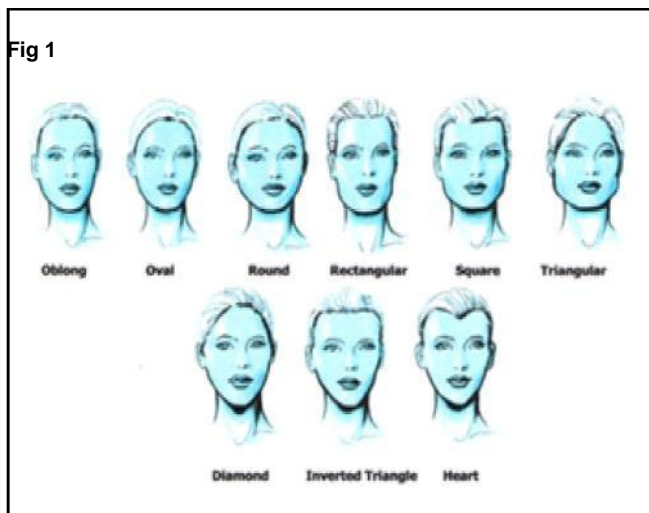
Objectives: At the end of this lesson you shall be able to

- identify the facial shape
- explain the sectioning & Elevation
- identify the tools use for hair cutting
- explain the hair cutting technique
- explain the techniques of blow drying.

Identify the facial shapes

The principles of modern hairstyling can be obtained when each of our patron's features is properly analyzed for hair styling and cutting. The key to success is to highlight a patron's best features (Positive) and down play the worst features (negative) and it should attractively frame the face to achieve best results in hair style

There are seven basic facial shapes: Oval, Round, square, oblong, triangle, inverted triangle and diamond. To get best hair style, generally try to create the illusion of an oval shaped face.



Oval shaped face: - In appearance the oval shape is about one and a half time longer than its width across the brow, the forehead is slightly wider than the chin. This type of face shaped patron can wear any hair style unless there are other consideration such as length and shape of nose or profile.

Round shaped face: - In appearance round hair line round chin line and wide face. Our aim should be to create the illusion of length to the face, which makes the face appear slimmer by giving volume on top and closeness at the sides.

Square shaped face: - In appearance face is wide at the temples, narrow at the middle third of the face, a

square off at the job. Our aim should be to offset or round out the square features by softening the hair around the temple and jaw, create volume around area between the temples and jaw, by adding width around the ear area.

Triangular (pear) shaped face:-In appearance face has narrow forehead, wide jaw and chin line. Our aim is to create the illusion of width in the forehead, by building volume at the temples and some height at the top to disguise the narrowness of the forehead with a soft fringe.

Judging hair cut for different face shapes

Oblong shaped face: - In appearance it is long, narrow face with hollow cheeks. Our aim is to give the appearance shorter and wider of the face, by keeping hair fairly close to the top of the head. At volume on the side to create the illusion of width. The hair should not be too long, as this would elongate the oblong shape of the face.

Diamond shaped face: - In appearance it has narrow forehead, extreme width the chick bones and narrow chin. Our aim is to reduce the width across the chick bone lines, by increasing the fullness across the jaw line and forehead while keeping the hair close to the head at the chick bone line to create an oval appearances. Avoid hair styles that lift away from the chicks or hair line on the sites near the ear area.

Inverted triangle shaped face: - In appearance it has wide forehead and narrow chin line. Our aim is to decrease the width of the forehead and increase the width in the lower part of the face, by reducing the width of the forehead and styling the hair close to the head with no volume. A fringe is recommended. In the chick bones area near the ear keep the outline to its widest at the jaw and neck area.

Sectioning for hair shaping

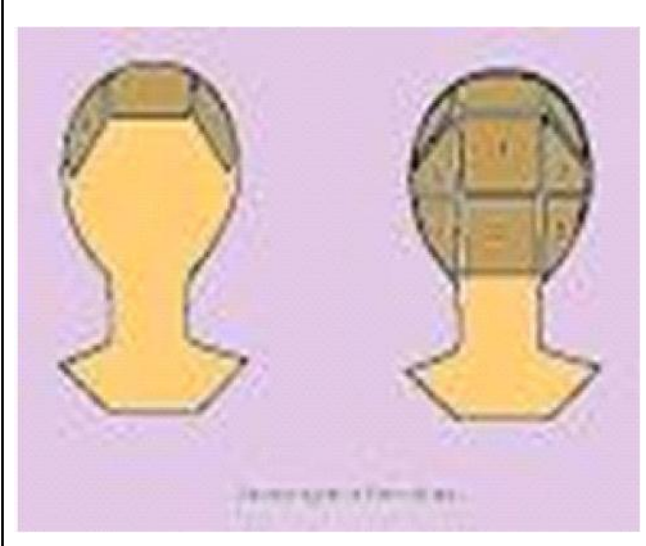
Sectioning helps you maintain control of the haircut while determining the bone structure and size of the head. This is important because you must know the distribution of hair at the top, sides, crown, and the nape. Sectioning is

depending on the style. The angle of the cut will vary in direction within the section.

Sectioning for the top

To decide the width of the frontal bone, place your fingers at the centre part of the top of your head. Noun your finger down the side of your head toward your ears. After determining the width, make two partings going toward the hairline and ending at a point.

Fig 2



Sectioning for the Crown

Behind the top section and between the parietal ridges on either side of the head, there is slight outline of the crown extend down to the base of the skull.

Sectioning for the Nape

With the crown section of the hair clipped up out of the way, You can find the width of the nape section by placing your fingers behind the ears and feeling for the ridge of the temporal bones. By using these bones as your guide, you will have the exact amount of hair for the nape.

Elevation

The angle or degree at which a subsection of hair is held, or elevated from the head when cutting is called elevation. Elevation is an action that occurs when you lift a subsection of hair above 0 degree.

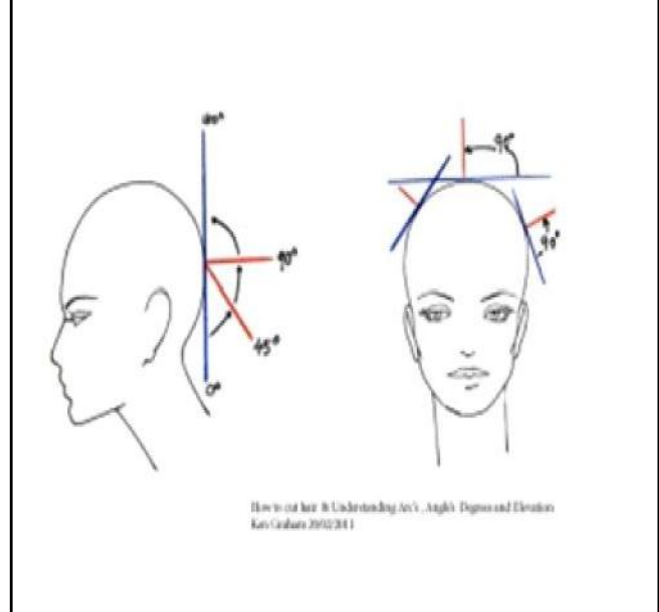
Elevation creates graduation and layers and is usually described in degree. The most commonly used elevation is 45 and 90 degrees. A general rule of hair cut is, the more you elevate the hair, the more graduation you create. When you elevate the hair below 90 degree, you are building weight. When you elevate the hair at 90 degree or higher, you begin to remove weight, or layer the hair.

Elevation define into three categories

1 Low elevation: The hair from the bottom third of the nape section is held at its lowest point, close to the neck. There is no elevation to the hair. The purpose

of the low elevation is to produce maximum bulk. This elevation is most effective when the hair is fine and thin.

Fig 3



2 High elevation: Hair that is lifted to the top of its section result in the highest elevation High elevation creates layers. A high elevation should be used on medium or thick hair, never on fine or thin hair.

3 Medium elevation: the hair lifted straight out from where it grows, and the fingers remain parallel to the head. The shears must follow the angle of the fingers. This cut gives you a perfect width of layered ends. A medium elevation can be used on blend hair.

Length and perimeter

Length is the distance from the scalp to the ends of the hair. Perimeter is the outer edge of the hair cut.

Angles and lines

A line a thin continuous mark used as a guide. Two basic lines are used in hair cutting-Straight and curved.

Three types of straight lines are commonly use in hair cutting.

Horizontal, Vertical, Diagonal.

Angles are most important elements in creating a strong base in hair cutting. This is a basic calculation. Angles are particularly important in two examples: elevation and cutting line.

Cutting line

Cutting line is known as finger angle, finger position, cutting position, and shears angle. This angle creates the end result of hair cut.